

HOXC10 Antibody (Center)
Affinity Purified Rabbit Polyclonal Antibody (Pab)
Catalog # AP17565C**Specification**

HOXC10 Antibody (Center) - Product Information

Application	IF, WB,E
Primary Accession	O9NYD6
Other Accession	NP_059105.2
Reactivity	Human
Host	Rabbit
Clonality	Polyclonal
Isotype	Rabbit IgG
Calculated MW	38073
Antigen Region	152-179

HOXC10 Antibody (Center) - Additional Information**Gene ID** 3226**Other Names**

Homeobox protein Hox-C10, Homeobox protein Hox-3l, HOXC10, HOX3l

Target/Specificity

This HOXC10 antibody is generated from rabbits immunized with a KLH conjugated synthetic peptide between 152-179 amino acids from the Central region of human HOXC10.

Dilution

IF~~1:10~50

WB~~1:1000

E~~Use at an assay dependent concentration.

Format

Purified polyclonal antibody supplied in PBS with 0.09% (W/V) sodium azide. This antibody is purified through a protein A column, followed by peptide affinity purification.

Storage

Maintain refrigerated at 2-8°C for up to 2 weeks. For long term storage store at -20°C in small aliquots to prevent freeze-thaw cycles.

Precautions

HOXC10 Antibody (Center) is for research use only and not for use in diagnostic or therapeutic procedures.

HOXC10 Antibody (Center) - Protein Information**Name** HOXC10

Synonyms HOX3I

Function Sequence-specific transcription factor which is part of a developmental regulatory system that provides cells with specific positional identities on the anterior-posterior axis.

Cellular Location

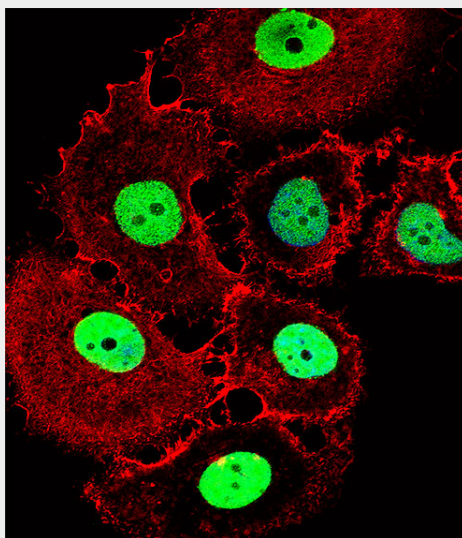
Nucleus.

HOXC10 Antibody (Center) - Protocols

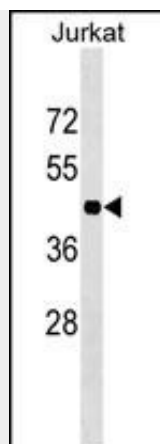
Provided below are standard protocols that you may find useful for product applications.

- [Western Blot](#)
- [Blocking Peptides](#)
- [Dot Blot](#)
- [Immunohistochemistry](#)
- [Immunofluorescence](#)
- [Immunoprecipitation](#)
- [Flow Cytometry](#)
- [Cell Culture](#)

HOXC10 Antibody (Center) - Images



Fluorescent confocal image of MCF-7 cell stained with HOXC10 Antibody (Center)(Cat#AP17565c).MCF-7 cells were fixed with 4% PFA (20 min), permeabilized with Triton X-100 (0.1%, 10 min), then incubated with HOXC10 primary antibody (1:25, 1 h at 37°C). For secondary antibody, Alexa Fluor® 488 conjugated donkey anti-rabbit antibody (green) was used (1:400, 50 min at 37°C).Cytoplasmic actin was counterstained with Alexa Fluor® 555 (red) conjugated Phalloidin (7units/ml, 1 h at 37°C). Nuclei were counterstained with DAPI (blue) (10 µg/ml, 10 min). HOXC10 immunoreactivity is localized to Nucleus significantly.



HOXC10 Antibody (Center) (Cat. #AP17565c) western blot analysis in Jurkat cell line lysates (35ug/lane). This demonstrates the HOXC10 antibody detected the HOXC10 protein (arrow).

HOXC10 Antibody (Center) - Background

This gene belongs to the homeobox family of genes. The homeobox genes encode a highly conserved family of transcription factors that play an important role in morphogenesis in all multicellular organisms. Mammals possess four similar homeobox gene clusters, HOXA, HOXB, HOXC and HOXD, which are located on different chromosomes and consist of 9 to 11 genes arranged in tandem. This gene is one of several homeobox HOXC genes located in a cluster on chromosome 12. The protein level is controlled during cell differentiation and proliferation, which may indicate this protein has a role in origin activation.

HOXC10 Antibody (Center) - References

Hwang, J.H., et al. Cloning Stem Cells 11(2):269-279(2009)
Zhai, Y., et al. Cancer Res. 67(21):10163-10172(2007)
Gabellini, D., et al. EMBO J. 22(14):3715-3724(2003)
Kosaki, K., et al. Teratology 65(2):50-62(2002)
Sandrock, B., et al. J. Biol. Chem. 276(38):35328-35333(2001)